

Olympic and Paralympic
Games
#Paris2024

Saint-Leu-la-Forêt
welcomes you...

ENVOIE
de SPORT



WELCOME TO SAINT-LEU-LA-FORÊT



Saint-Leu is ready to welcome you !

Welcome you with all that we are and have.

Saint-Leu-la-Forêt is an athletic town, a town rich in stories, a charming and pleasant town, on a human scale, where it is good to breathe.

The forest which borders our town brings us balance and freshness. In it we can run, walk or observe nature.

Our town is like that, everyone can live serene and joyful moments.

It's this identity, which is profoundly engrained, that we wish to share with you at the occasion of your future visit.

This quality of life contributes to the best training conditions: with first-class infrastructures, an accessible road network, popular sports facilities, a variety of shops and a sense of hospitality that meets your legitimate expectations.

When preparing for a unique sporting event, such as the Olympic and Paralympic Games, it is vital to be in the right environment.

It is necessary to put all the chances on your side.

And there is no doubt that Saint-Leu-la-Forêt is a worthy asset.

Welcome to Saint-Leu-la-Forêt !

Sandra Billet

Mayor of Saint-Leu-la-Forêt



Certified Training Community

SPORTS PARK 2024

A town at the gates of Paris (20 km/12.4 mi), surrounded by the Montmorency Forest (2200 ha/ 5436 acres), equipped with high-quality sports facilities, and an exceptional environment to welcome your training sessions for the Olympic and Paralympic games of Paris 2024.

AN ACCESSIBLE TERRITORY BETWEEN CITY & NATURE

With a third of its territory being composed of the Montmorency Forest, genuine green lung, and a multitude of green spaces (public or private parks), Saint-Leu-la-Forêt benefits of a privileged and attractive living environment.

Located only twenty or so kilometers from Paris, Saint-Leu-la-Forêt nonetheless possesses all of the characteristics of a provincial village with its small and friendly train station resembling a “Normand cottage”, its traditional town center filled with heritage and pathways which allow you to admire, peacefully, the beautiful homes made of millstone with charm of yesteryear.

The town of Saint-Leu-la-Forêt is easily accessible through roads or public transportation. With the RER C and Transilien SNCF (train) line, you will be less than 30 minutes away from the Olympic installations (The Olympic Village and competition sites) located in the center of Paris. Saint-Leu-la-Forêt is also accessible by three bus lines.

Town of Saint-Leu-la-Forêt

- Pathway
- sports equipment
- City center

Town hall

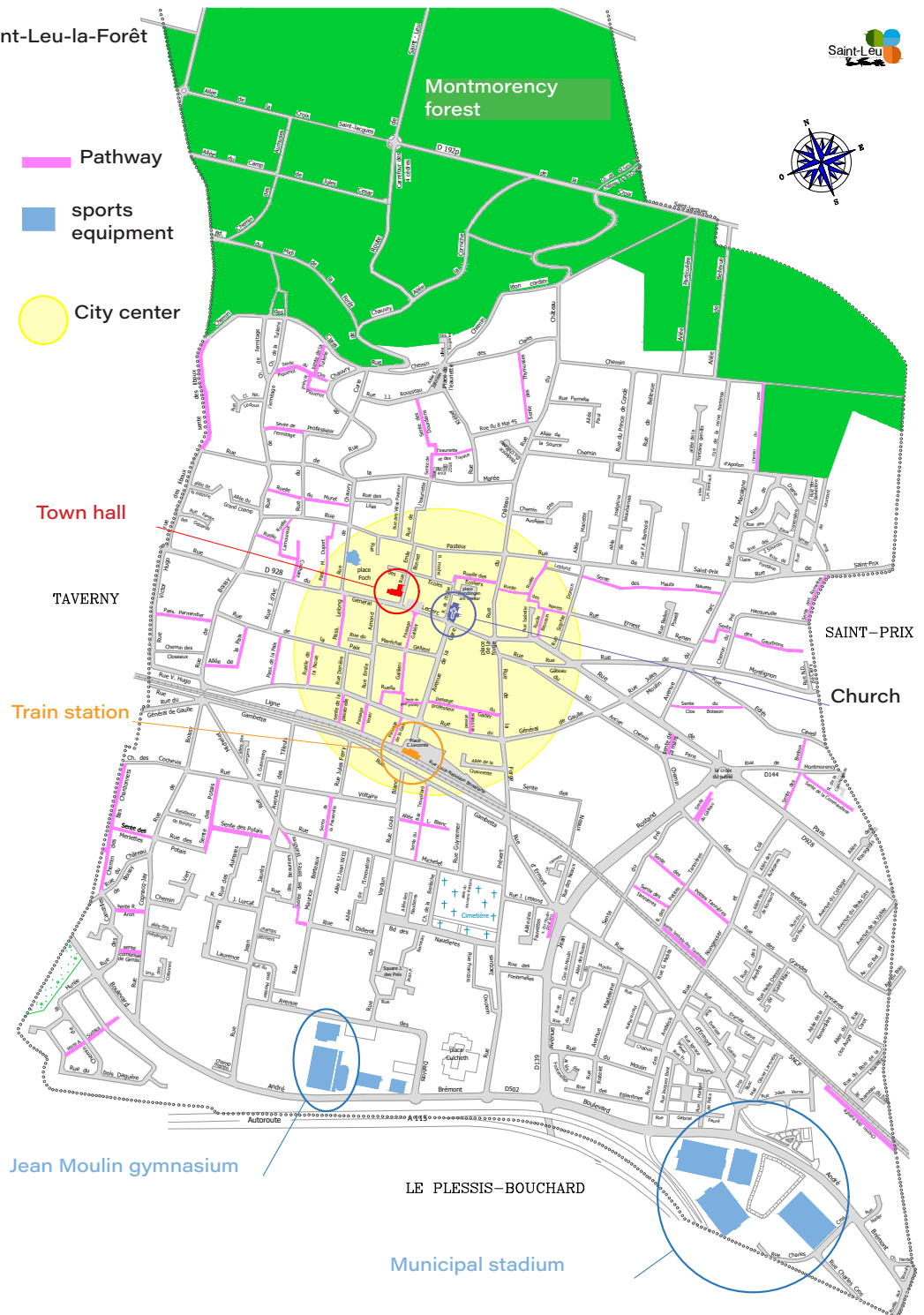
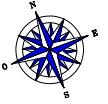
TAVERNY

Train station

Jean Moulin gymnasium

LE PLESSIS-BOUCHARD

Municipal stadium

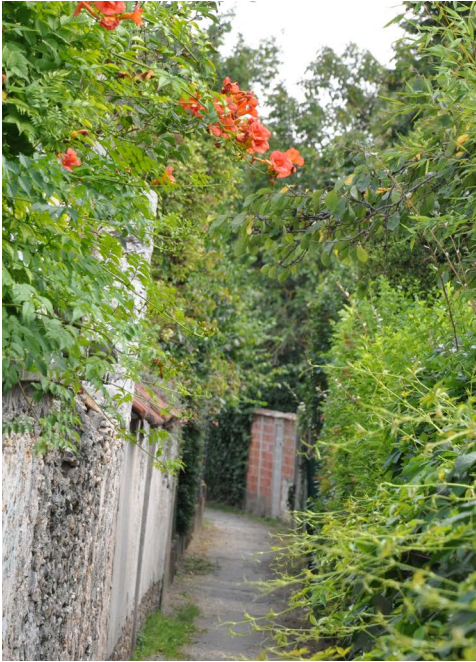




Bringing together the assets of a green town and environment, Saint-Leu-la-Forêt offers a calm and calming lifestyle close to Paris, ideal for preparing the Olympic and Paralympic Games of Paris 2024.

The forest in numbers :

- **1970** hectares (4868 acres) / 4 times the size of New York City's Central Park
- **30 km** (19 mi) of designated trails - Several km of equestrian trails - 2 big hiking trails





HIGH QUALITY SPORTS INFRASTRUCTURES

Based on the daily engagements in favor of sports, the town is labeled “Ville Active & Sportive” (Active and Athletic town) since august 26th, 2021 and “Terre de Jeux 2024” (Training territory of the 2024 games) since September 11th, 2020.

The latter, created by “Paris 2024” in order to involve as many communities as possible in the Olympic adventure, rewards the dynamic put forward by our collectivity.

High level sports are at home here, as illustrated by the large international events regularly held in our town.

With such a “love for sports”, it comes as no choc that Saint-Leu-la-Forêt was labeled as an Active and Athletic town (“Ville Active & Sportive”) and “Terre de Jeux 2024”!

The “Gérard Houiller” municipal stadium is a referenced Center of Preparation for the Games (CPJ) and the “Jean Moulin” athletic complex, both high quality infrastructures, benefit from direct access to major highways (A15 and A115) as well as the train station. By train, Paris-Gare du Nord is 20 minutes away and the “Stade de France” (stadium) is a mere 17 km (11 mi) or 25 minutes away using public transportation. The Charles de Gaulle (CDG) airport is located 30 km (19 mi) away from the town.

Situated close to the city center, you will have easy access to all its merchant offers and services. The city center is 20 km (12 mi) away from Paris using the direct access to the A115 highway.

Evidently, the major asset of these two sites is their capacity offer a variety of high-quality infrastructures that respond adequately with the expectations and requirements of high-level athletics.

- **MUNICIPAL STADIUM**
GÉRARD HOUILLER
(LABELED CPJ)



CERTIFIED PREPARATION CENTER FOR THE GAMES (CPJ) :



The “Gerard Houiller” municipal stadium, which, since 2021, is named after the ex-French football team scout, is a central piece of equipment of the town.

Easily accessible, this stadium is made up of a variety of high-quality equipment adapted for high-level football and its specific physical preparation.

There are 3 entrances to the stadium: one main secured entrance and two secondary entrances. The interior parking lot can welcome over five cars and two buses. The stadium is entirely closed off and far from housing, there is also a possibility for closed sessions.

- 4 football fields: an honor field classed at a level 4, two synthetic fields (Alain Loisel and Daniel Robin) and a grass training field.

Légende :

- Honor field
- Synthetic field “Daniel Robin”
- Synthetic field “Alain Loisel”
- Grass field
- Locker rooms
- Club house

Infos géographiques :

- Town center : 7 min (2,6 Km/ 16 mi) • Jean-Moulin sports complex : 4 min (1,4 Km/ 9 mi)
- Simone Veil Hospital : 7 min (2,8 Km/ 17 mi)

FOLLOW US !

FOR A VISIT OF THE STADIUM AND SEE FOR YOURSELF THE QUALITY OF THE FACILITIES OFFERED !

The infrastructures present :

Honor field (grass)



Information :

- 105m x 68m natural grass field with an automatic watering system around and within the field,
- Approved level 4,
- A capacity of 1158 places within the 2 stands, with a club house,
- Approved lighting,
- Peripheral protection with an anti-intrusion fence,
- Electric score board.

Annex field "Daniel Robin" (synthetic)



Information :

- 105m x 68m synthetic grass field with an automatic watering system,
- Approved level 4,
- Peripheral protection with an anti-intrusion fence,
- Capacity of 125 places and 2 handicapped places.

AS WELL AS...

Annex field "Alain Loisel" (synthetic)



Information :

- 80m x 50m synthetic field, with lighting,
- Peripheral protection with an anti-intrusion fence.

Grass practice field



Information :

- 105m x 68m natural grass field, with lighting,
- Peripheral protection with an anti-intrusion fence.

BUT ALSO...

Locker rooms



Infos :

- 8 locker rooms for athletes waiting at the honor field (4 of which are 20m2 + 1 shower + 1 restroom),
- 4 official locker rooms (2 of which are 12m2 + 1 shower + 1 restroom),
- 1 medical space (infirmary, can be used as an antidoping room,
- Room for the storing of materials .

Locker rooms

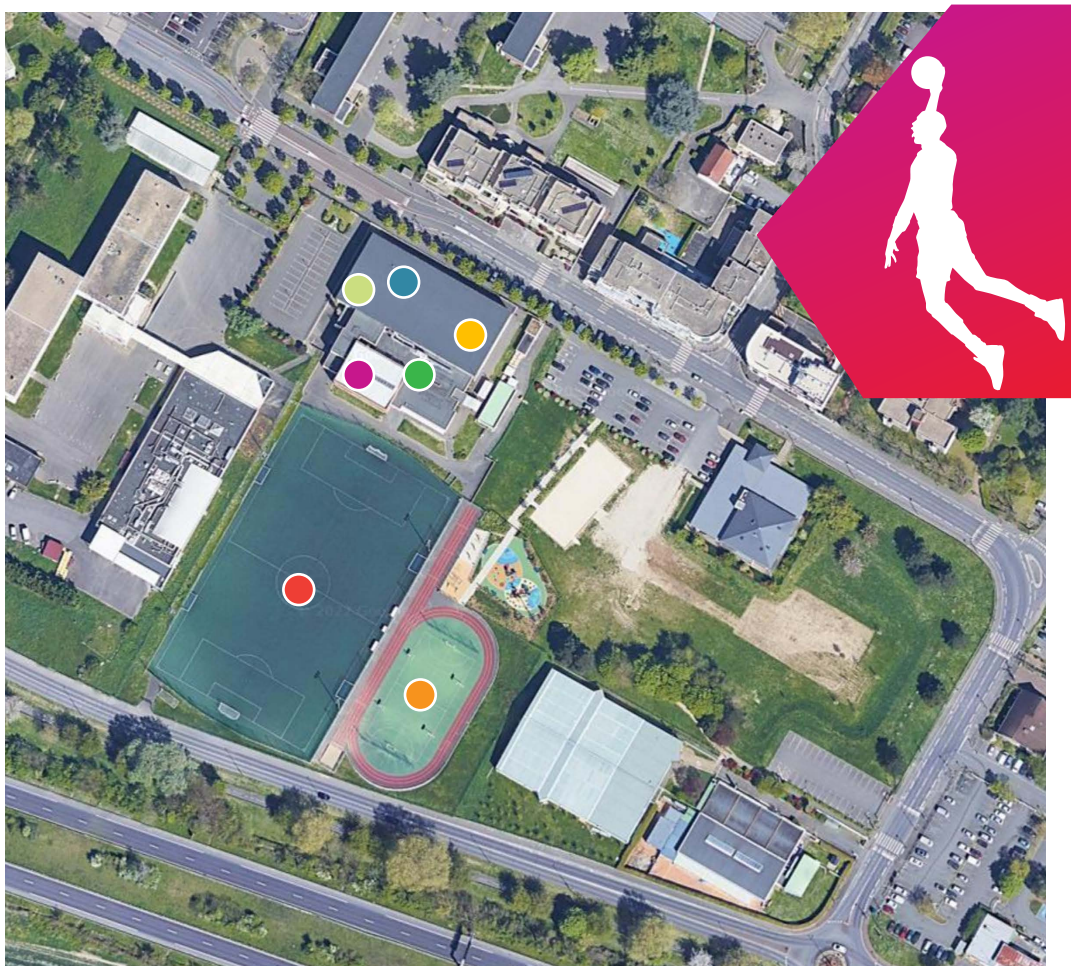


Infos :

- 80m2 that can be turned into a relaxation space, video conference room, restauration space,
- Bar, Wifi.

- **SPORTS COMPLEX**
JEAN MOULIN





The “Jean Moulin” sports complex, easily accessible and is in close proximity to the highway exit, is made up of a variety of high-quality infrastructures for the practice of sports and its physical preparation.

Enter the stadium can be done through the main secured entrance or either of the secondary entrances. The interior parking lot can welcome more than 20 cars.

You can find different rooms:

- Omnisport, multisport / rock climbing, bodybuilding, dance and the exterior plateau (athletics, basketball and handball).

Legend :

- Omnisport room
- Multisport / rock climbing room
- Bodybuilding room
- Dance room (2nd floor)
- Locker rooms
- Synthetic field
- Exterior plateau

Geographic information :

- Town center: 5 min (1,7 km/ 10,5 mi) • Municipal stadium: 4 min (1,4 km/ 9 mi)
- Simone Veil Hospital: 10 min (3,9 km/ 24 mi)

The equipment present :

Omnisport room



Infos :

- 1000m² (1094 yd²) for activities such as basketball, handball, volleyball, archery (30 m/ 33 yd), badminton,
- Secured access,
- Gerflor PVC flooring,
- Stands with a 290-person capacity,
- Renovation of the led lighting in 2018 allowing for competitions
- Electronic scoreboard ,
- 2 common locker rooms with showers (8), official/umpire locker rooms with showers (2), restrooms (1 men/ 1 woman with 5 bathrooms each and 2 handicapped bathrooms).

Multipurpose room/rock climbing



Infos :

- 300 m² (328 yd²) that can be dedicated to rock climbing (seven lanes of 7 m in height) badminton, table tennis,
- Secured access,
- Gerflor PVC flooring,
- Heated flooring,
- Sodium lighting,
- 2 common locker rooms with showers (8), official/umpire locker rooms with showers (2), restrooms (1 men/ 1 woman with 5 bathrooms each and 2 handicapped bathrooms).

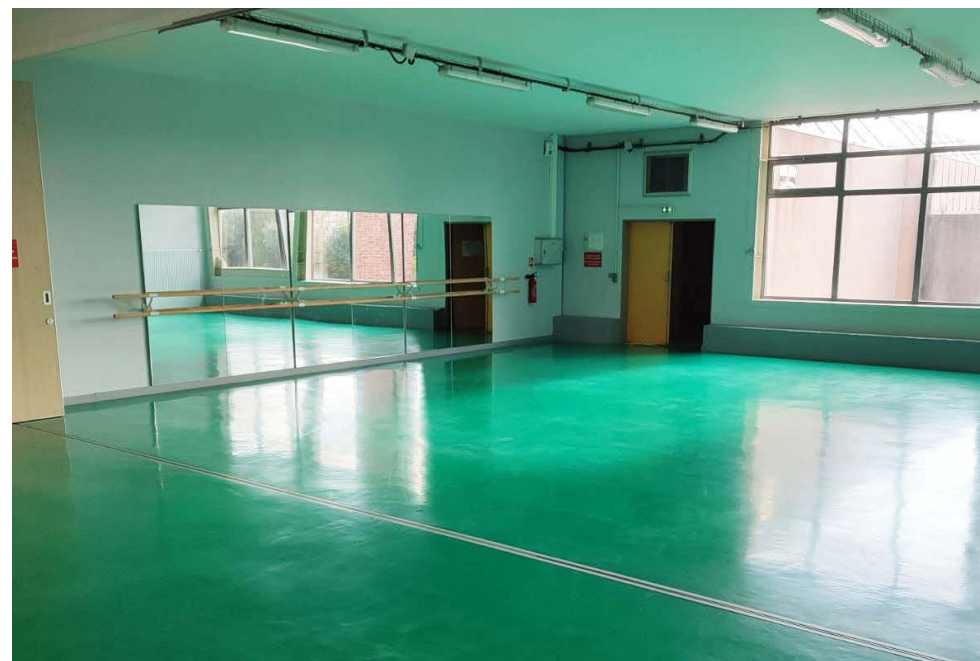
Bodybuilding room



Information :

- 160 m² (525 ft²) equipped,
- Secured access,
- Wax concrete flooring,
- Guiding devices, manual charging devices, bodybuilding benches, bodybuilding accessories and dedicated cardio space,
- 2 common locker rooms with showers (8), official/umpire locker rooms with showers (2), restrooms (1 men/ 1 woman with 5 bathrooms each and 2 handicapped bathrooms).

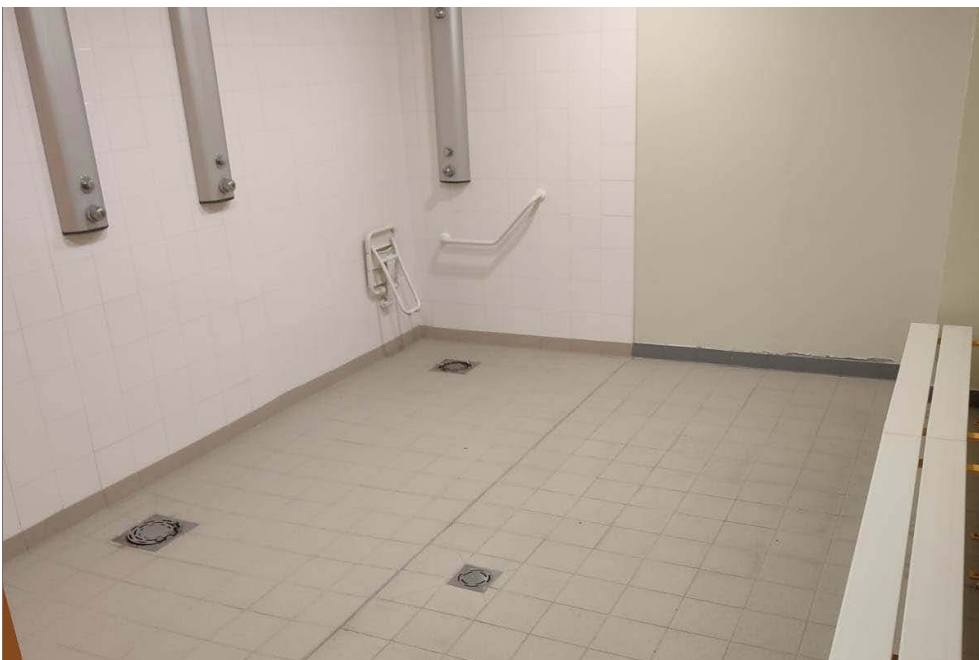
Dance studio



Information :

- 230 m² (755 ft²) dedicated to fitness, recovery, stretching...
- Secured access,
- Waxed concrete flooring
- Handicapped access,
- 2 common locker rooms with showers (8).

Locker rooms



Information :

- 8 locker rooms for players adjacent to the honor field (4 of which are 20 m² each + 8 showers),
- 4 official locker rooms (2 of which are 12 m² (39 ft²) + 1 shower + 1 bathroom,
- 1 medical space (infirmary, can be used as an antidoping room),
- Room to store any and all materials.

Synthetic field



Information :

- 100 m x 58.50 m (328 ft x 192 ft) synthetic grass field, with lighting,
- Peripheral protection with an anti-intrusion fence,
- 2 common locker rooms and Showers (8).

Nearby : The Diablot plains



Information :

Juxtaposed to the Jean Moulin sports complex

- An outdoor platform made up of a polyurethane athletic track, of two basketball courts, a handball field, and a jumper,
- A workout space.

Ballodrome and the Diablot plain



AND FOR OUR 2 SITES :



Restauration and housing

To dine and rest, you can benefit from a large selection of offers, based on your tastes and budget. Whatever your choice may be, one thing is certain: you will always be properly received in Saint-Leu-la-Forêt !

To eat at your practice location, a room and/or a catering service can be made available. We can also, if you wish, organize your stay with us entirely, we will then contact the contractors for you.



Medical aid



Within both infrastructures, a medical bay can be put in place.

If you wish to have medical personnel present, specialized professionals are available (doctor, physical therapist...)

Nearby (less than 5 min by car), you can also benefit from services and advice at the Simone Veil hospital, as well as the Claude Bernard-Ramsy Santé private clinic.



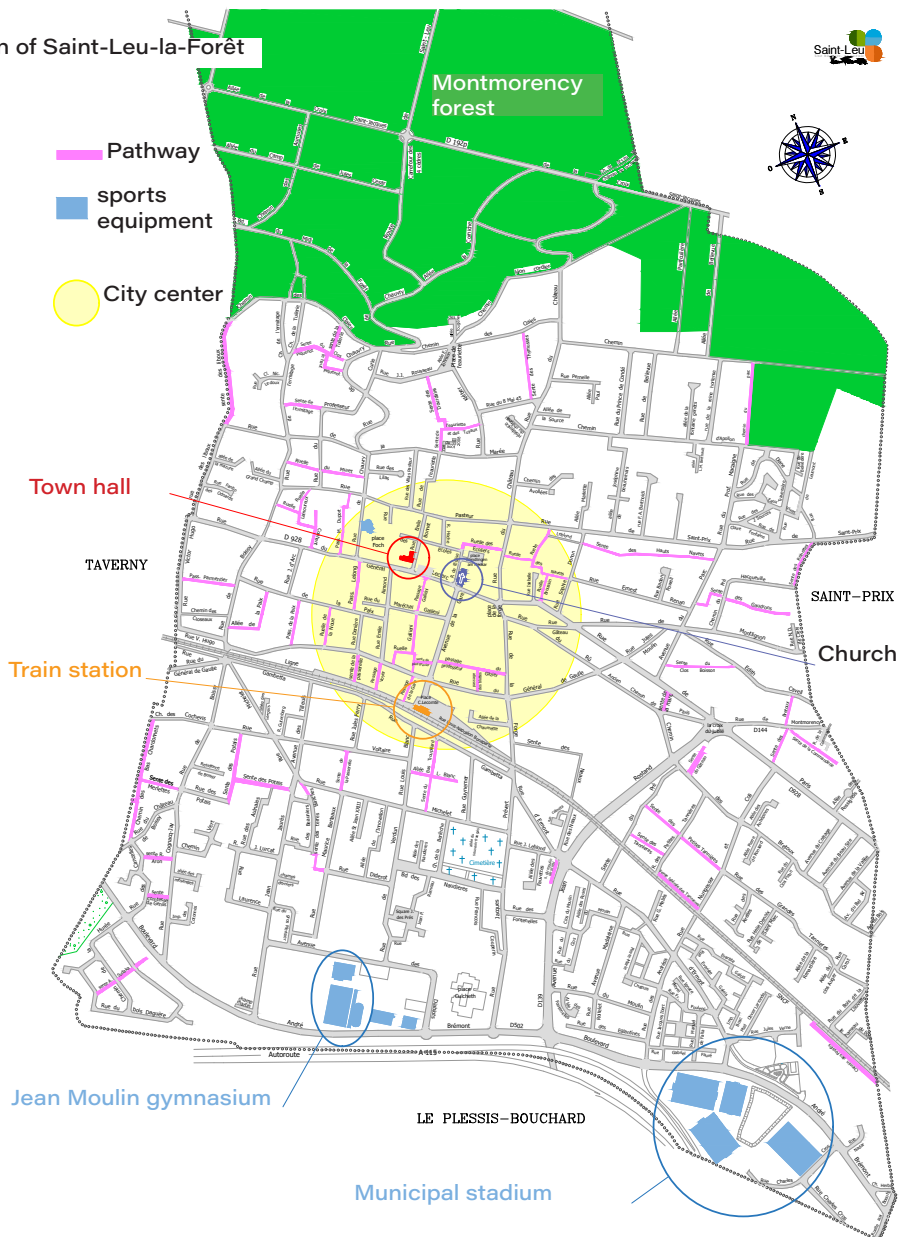
Security of the site and security guarding of materials

The Gérard Houiller municipal stadium and the Jean moulin sports complex are two secured locations, which can be entirely closed off, where it is possible to train without spectators.

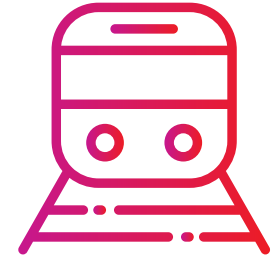
Locker rooms and a secured storage area can be made available.

We can organize the transportation of your sports equipment and your athletes (from the airport, the train station, your housing accommodation...)

VENIR À SAINT-LEU



- From Roissy Charles de Gaulle
30 min (35,6 km/ 22 mi)
- From Orly
52 min (52,8 Km/ 32,8 mi)



- From Gare du Nord
27 min (train line H)



- 3 buses are available at Saint-Leu-la-Forêt :
- Line 30-14
 - Line 30-23
 - Line 95-03



- 20 minutes from Paris
by the A15

- **SAINT-LEU-LA-FORÊT**

WELCOMES LARGE
SPORTING EVENTS !



INTERNATIONAL SPORTING EVENTS:

- Comoros- Madagascar football game at the municipal stadium (November 11th, 2017),
- Togo- Nigeria football game at the municipal stadium (March 21st, 2018).



NATIONAL COMPETITIONS:

- ▶ Regular French football championship with “La Red Star” (2015-2016) (male football),
- ▶ Cup of France of Football (Coupe de France de football) games (16th and 8th final).



REGIONAL EVENTS :

- ▶ The Hillside Run, “La course des Coteaux », (running race of 5 to 10 km) with 800 participants,
- ▶ The Devil Bridge Run, “La course du pont du Diable”, (competitive and leisure bike race) with 200 participants,
- ▶ 40 Bump Trail (trail run of 10,20 and 41 km) with 2000 participants...



Throughout the years, Saint-Leu-la-Forêt has acquired the experience and knowledge necessary to welcome high-level sporting events and respond to their expectations.

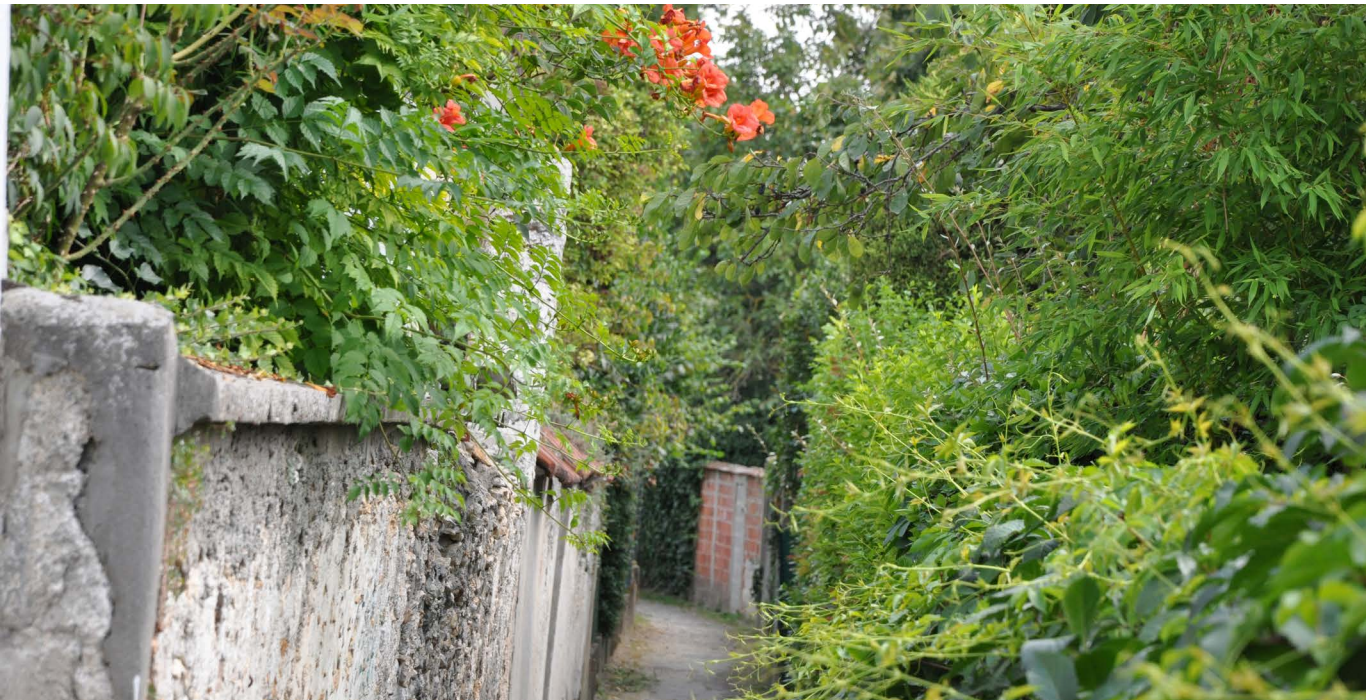
- **TO SEE AND DO
NEARBY**

TOURISM
& CULTURE

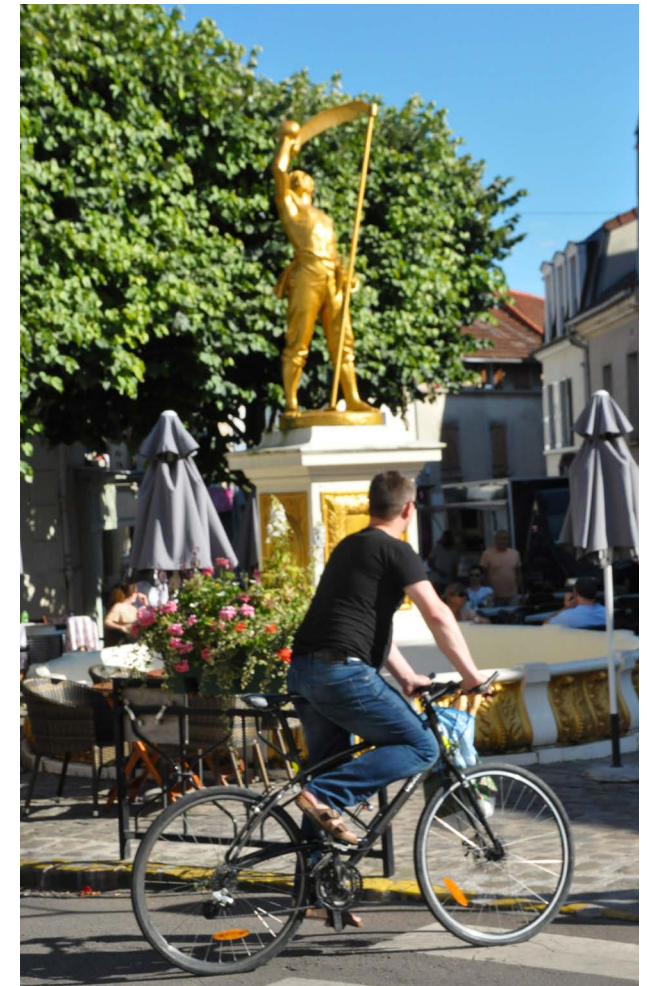


SPORTS OF COURSE BUT TAKE ADVANTAGE OF YOUR VISIT TO DO (SOME) TOURISM!

Saint-Leu-la-Forêt... Simply !



- ➡ Stroll in the different pathways while enjoying its gentleness and the richness of its heritage.
- ➡ Visit the Saint-Gilles church, the Consular Office, the town hall...
- ➡ Take a walk in the Montmorency Forest.



SAINT-GILLES CHURCH

[LABELLED HERITAGE OF REGIONAL INTEREST]



The first church of Saint-Leu-la-Forêt was located on the hillside, at the same level as the churches of Taverny and Saint-Prix (towns bordering Saint-Leu-la-Forêt). In 1690, a new church was constructed in the heart of the current village. This same church was entirely restored by Louis-Napoléon Bonaparte in 1851.

In 1991, this church was the focus of a new exemplary restoration within the framework of a Regional Contract. The restoration, realized under the direction of the architect of French buildings, allowed for the renovation of the façade and to create new stained-glass windows. In 1993, the interior of the bell tower was entirely remodeled. And finally, recently the exterior façade of the bell tower.

Inside the church

In the crypt, located under the choir, several members of the Bonaparte family are buried in stone sarcophagi. In 1995, on the 150th anniversary of the death of Louis Bonaparte, King of Holland, the four tombs were completely restored. (Visits are possible on the first Saturday of each month from 9:30 to 11:30 am).

A beautiful statue of the virgin Mary and of the Child, classified since February 2000 as a historic monument, carved in the purest marble of Carrara, is thought to have been gifted by his Holiness Pope Pius IX.

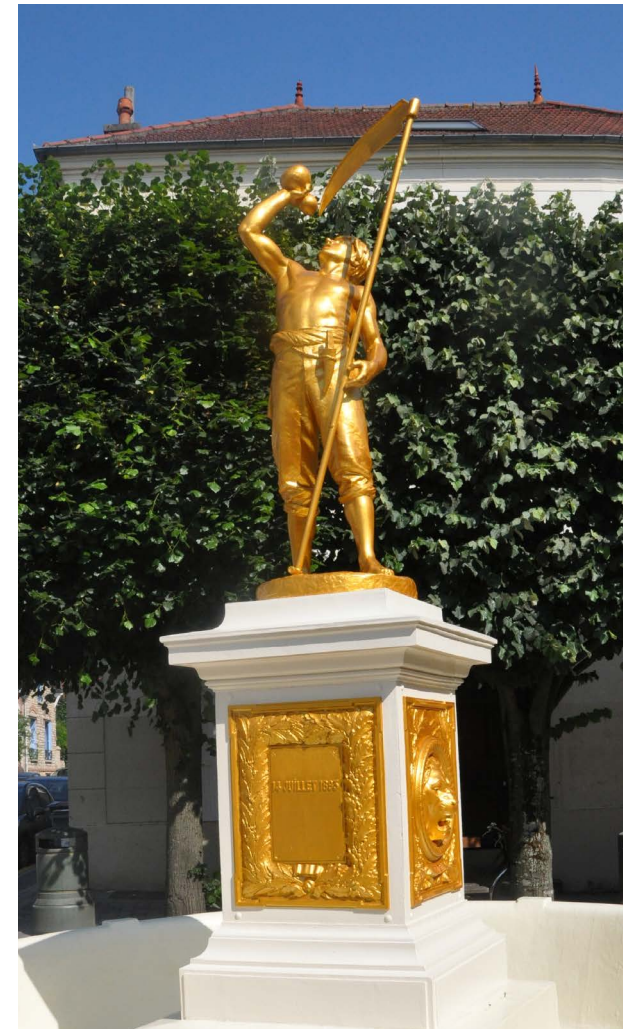
Behind the choir stands a large white marble monument to the glory of Louis Bonaparte represented in ceremonial costume, also classified as a historical monument.

At the back of the choir, a vast fresco dedicated to Saint Napoleon, Saint Louis and Saint Charles was magnificently restored in 1996, with the financial support of the Napoléon Fondation.

The organs are the work of Cavaillé-Coll, donated by Napoleon III and typical of 19th century organ building. The Municipality had them restored a few years ago with the help of the Department and the State. In 1986, they were classified as Historical Monument.

FORGE SQUARE (LA PLACE DE LA FORGE)

This square, made famous in Saint-Leu-la-Forêt and its surroundings by its original statue of the harvester, has existed for at least 6 centuries. Located in the heart of the town, it was an ideal meeting place for carriages and stagecoaches. The horses would quench their thirst in the fountain upon arrival. During this time, the blacksmiths replaced the irons, and the travelers ate at the “Croix-Blanche” inn, one of the most renowned restaurants of the region. Erected in 1893, the statue of the harvester evokes the countryside of yesteryear.



THE PRINCE OF CONDÉ

In 1819, the Prince of Condé settled in Saint-leu-la-Forêt's castle with his mistress, the baroness of Feuchères. On August 27th, 1830, he was found hanging from his window, and although the theory of suicide was adopted, the circumstances of his death remain unclear.

A few years later (June 1844), a monument was erected on the famous site of the crusade. This stone column, topped by a marble cross, is still visible from rue du château (Castle Street in English – the name of a street located in Saint-Leu-la-Forêt). The milestones of its base preserve their astonishing masks of knights which recall the ancient feats of arms of the Condé family. It is simple, there, the entertainment is everywhere!



THE WASH HOUSE OF THE EAURIETTE

A cadastral plan from 1730 mentions the Place de Lariette as a common square. Consecutively, Lariette (in 1730), then Loriette (in 1789), and in 1894 it became l'Eauriette. The "laughing source" which springs up at the bottom of the square most likely gave it its name. Often, vineyard workers who worked on neighboring hillsides would come quench their thirst. In 1873, a 300,000-liter reservoir was built to supply a half-dozen hydrants and three washhouses. The Eauriette became the meeting place of the laundry women and housewives. It was a very frequented place, however between the two world wars, the washhouse was forgotten... and became ruins. Today, the ancient washhouse has been reconstructed to look identical to the original.

The garden that surrounds it has been landscaped.



**BECAUSE IMAGES ARE WORTH A THOUSAND WORDS,
COME AND TRAIN IN SAINT-LEU-LA-FORÊT**



SO IT'S DECIDED, WE WILL SEE YOU SOON ?



Saint-Leu-la-Forêt is an active and athletic town!

With over 2000 licensees, forty or so associations and quality athletic infrastructures, Saint-Leu-la-Forêt maintains a strong relationship with sports. Indeed, the town is enriched all year round by events that are the joy of its inhabitants.

Designated “Terre de Jeux 2024”, Saint-Leu-la-Forêt is ready to welcome Olympic delegations from around the world.

We are engaged: the Olympics and Paralympics of Paris will be a celebration and Saint-Leu-la-Forêt is the ideal destination, which can be yours.

We offer optimal conditions and choice installations : as a training ground or as a home base during Paris 2024.

Saint-Leu is waiting for you, we are waiting for you!

Sportingly yours,

Jean-Michel Castelli

Deputy to the mayor
Sports and youth delegate



Contact us !

Town Hall of Saint-Leu-la Forêt

52 Avenue du Général Leclerc
95230 Saint-Leu-la-Forêt, FRANCE

Department of School Affairs, Children, Youth and Sports

14 rue de l'église
95320 Saint-Leu-la-Forêt, FRANCE
Phone: (+33) 1 30 40 22 53
Email: florence.clavier@saint-leu-la-foret.fr

Cabinet

Phone: (+33) 1 30 40 22 91
Email: cab@saint-leu-la-foret.fr

Website: www.saint-leu-la-foret.fr

Contact us: from Monday to Friday, 9 am to 12:30 pm and 1:30 pm to 5 pm (French time)

Traduction by Juliette Lijko

Suivez-nous

